



BARGE MASTER
MOTION COMPENSATION SOLUTIONS



95% uptime

compensation up
to Hs. 3,0m

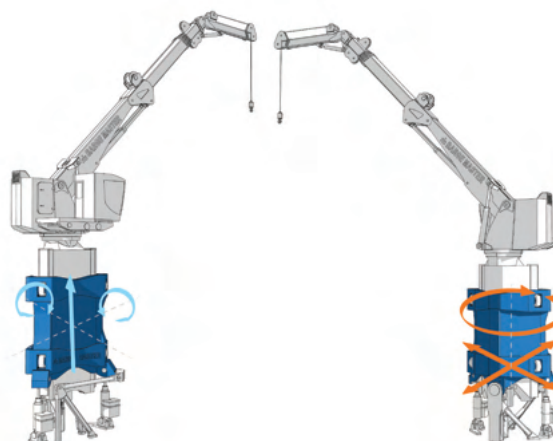
full compensation
of entire crane

work at sea year
round

3D MOTION COMPENSATED CRANE

The Barge Master Motion Compensated Crane enables controlled lifting operations with a high crane capacity, making it possible to work at sea almost year-round. It has proven to increase workability in the North Sea from 180 to 330 days.

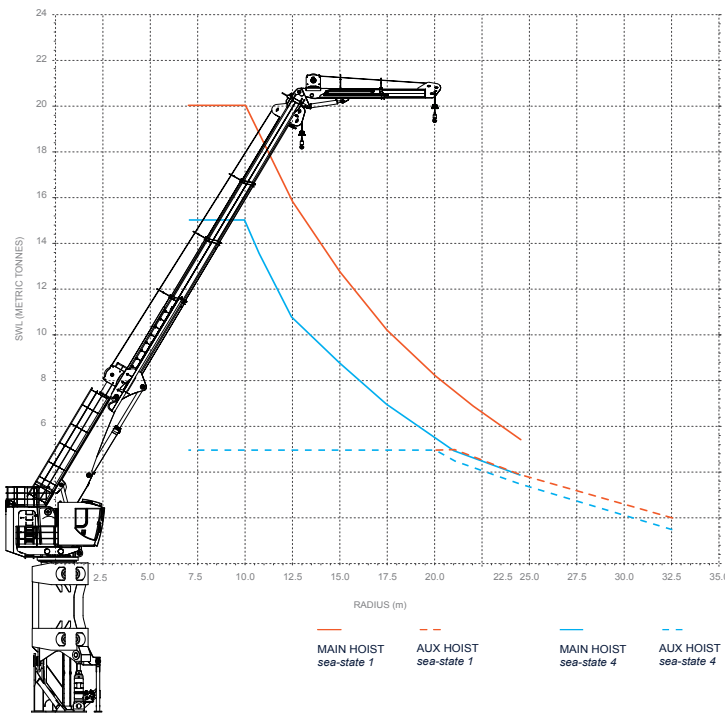
The Barge Master Crane is designed for maintenance support vessels and platform supply vessels. By compensating the motions at the basis of the crane, both the operator and load are kept completely stable.



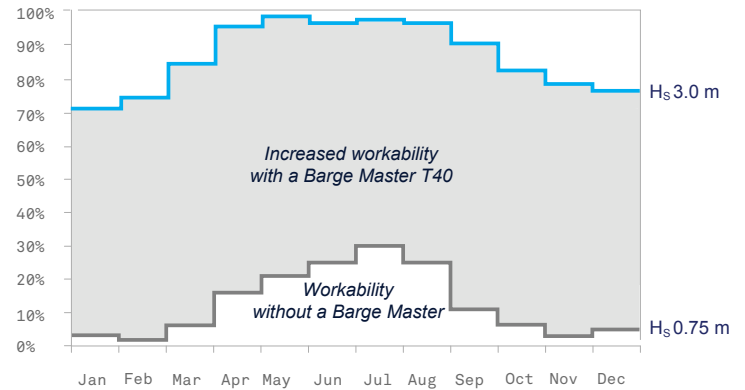
Compensation
of **roll, pitch
and heave**
motions.

Constraint of
other motions.

CAPACITY & WORKABILITY



The crane features a small footprint and is able to lift 32 metres above sea level at a reach of up to 20 metres or 15 tonnes at a reach of 10 metres. In addition to its lifting capacity, the crane is also manriding certified for safe personnel transfer.



SERVICING SHELL/NAM PLATFORMS



The BM-T40 is working for Shell/NAM since 2015 on the W2W vessel Kroonborg. By using a dedicated vessel Shell/NAM where able to decommission all there platform cranes. The BM-T40 outperformed the initial expectations, making it possible to work 330 days a year. This resulted in a second W2W vessel, the Kasteelborg.

GENERAL

Crane capacity	15 mT at 10 m 5 mT at 20 m
Crane lifting height (from deck)	35 m

COMPENSATION

Wave height	H _s 0 - 3 m
Wave period	4 - 18 s
Heave, roll and pitch motions	95%
Onboard lifting functionality	
EN13852-1 manriding certified	

DIMENSIONS & WEIGHT

Foundation footprint	4.8 m x 3.7 m
Platform height (retracted)	8.3 m
Barge Master	85 mT
HPU	34 mT
Crane (typical weight)	39 mT



Barge Master

T +31 (0)10 409 00 60
E info@barge-master.com
W www.barge-master.com

Spotlight
on new
TECHNOLOGY

